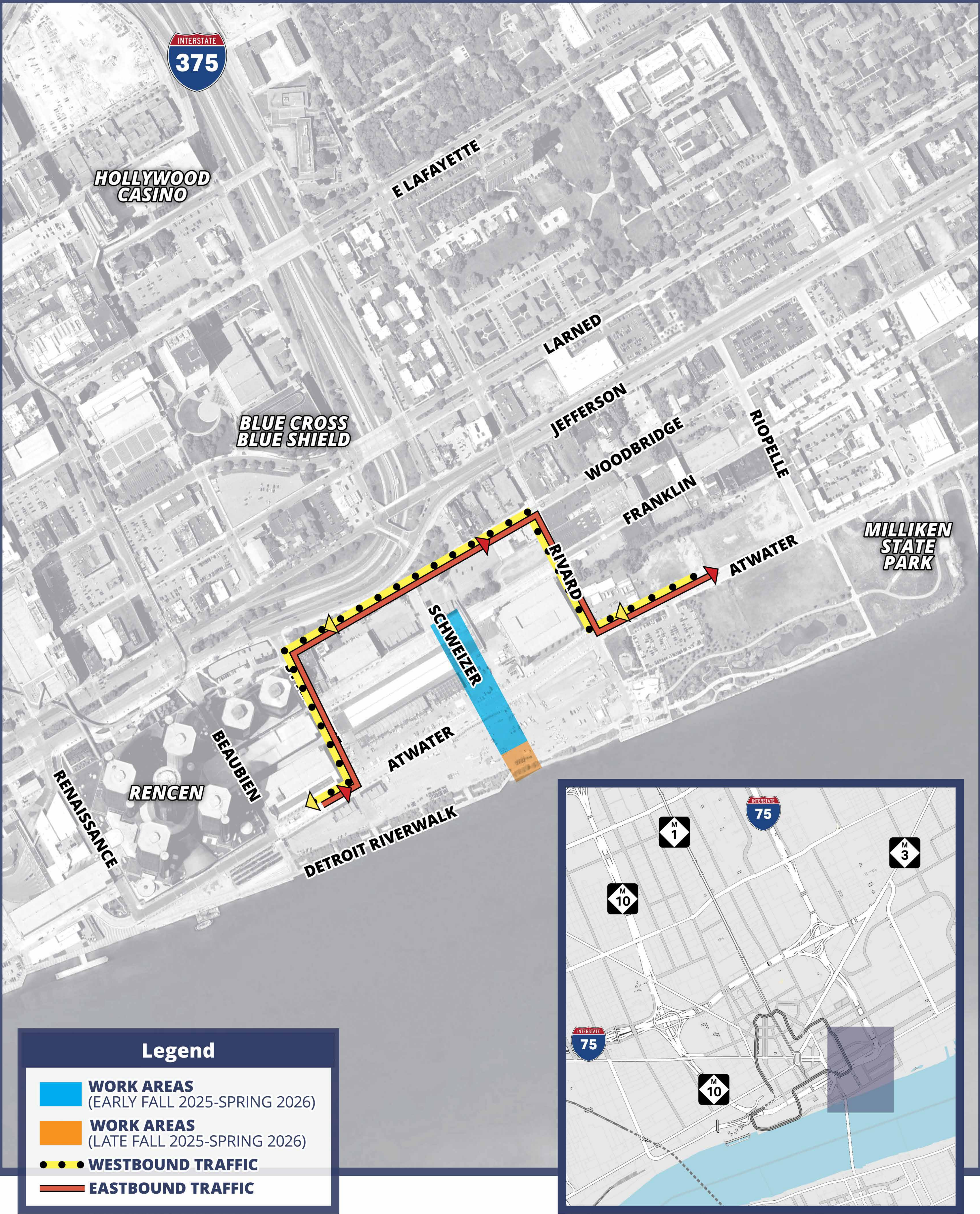


# I-375 RECONNECTING COMMUNITIES PROJECT

## Early Work Motorized Detours

### TRAVEL PATTERNS DURING CONSTRUCTION



I-375 RECONNECTING COMMUNITIES PROJECT

# Early Work Nonmotorized Detours

TRAVEL PATTERNS DURING CONSTRUCTION

PHASE 1 AND PHASE 2 - FRANKLIN STREET CLOSED (FALL 2025-SPRING 2026)



PHASE 1 - ATWATER STREET CLOSED (EARLY FALL 2025-NOVEMBER 2025)



PHASE 2 - RIVERWALK CLOSED (NOVEMBER 2025-SPRING 2026)

